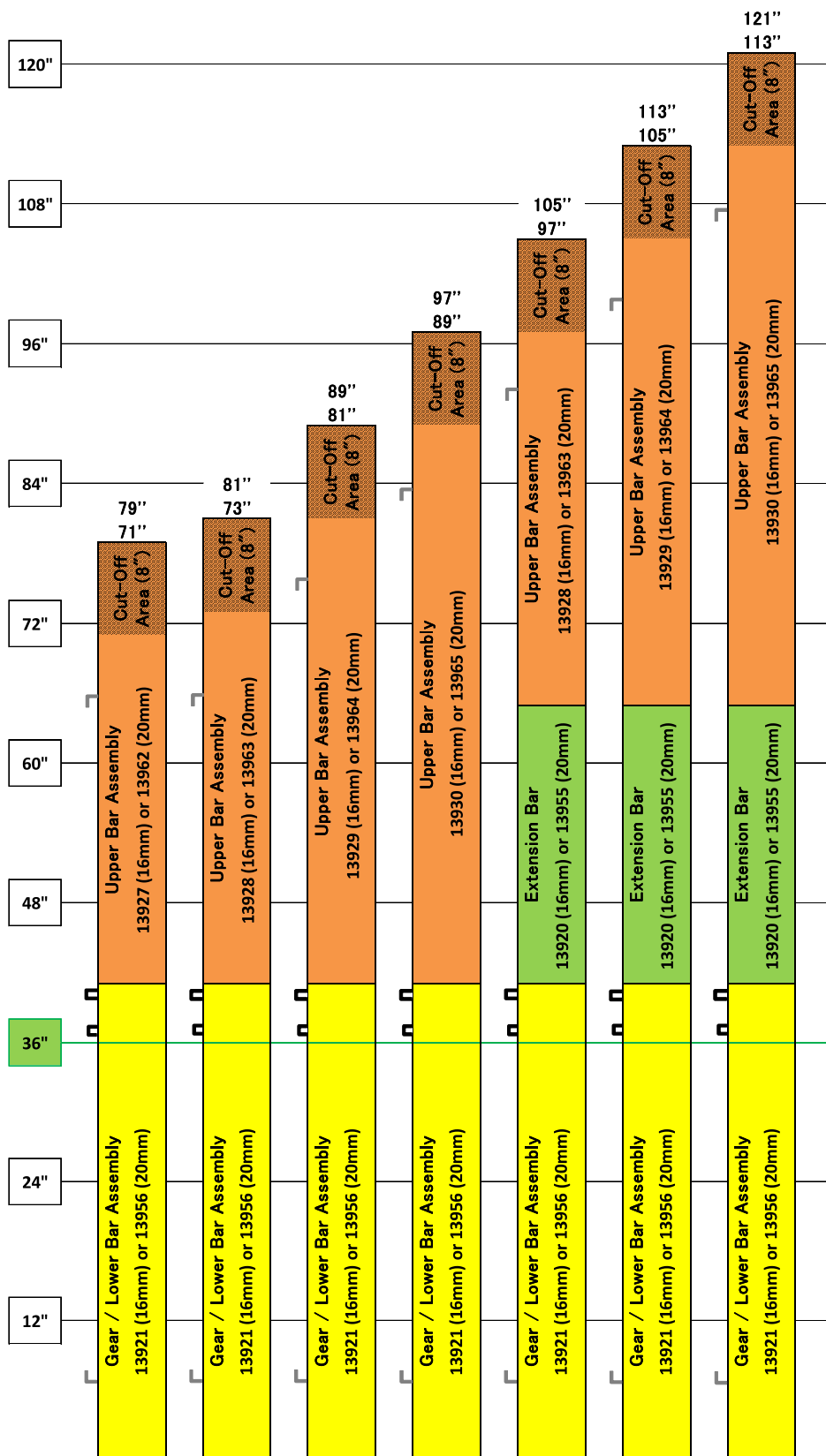
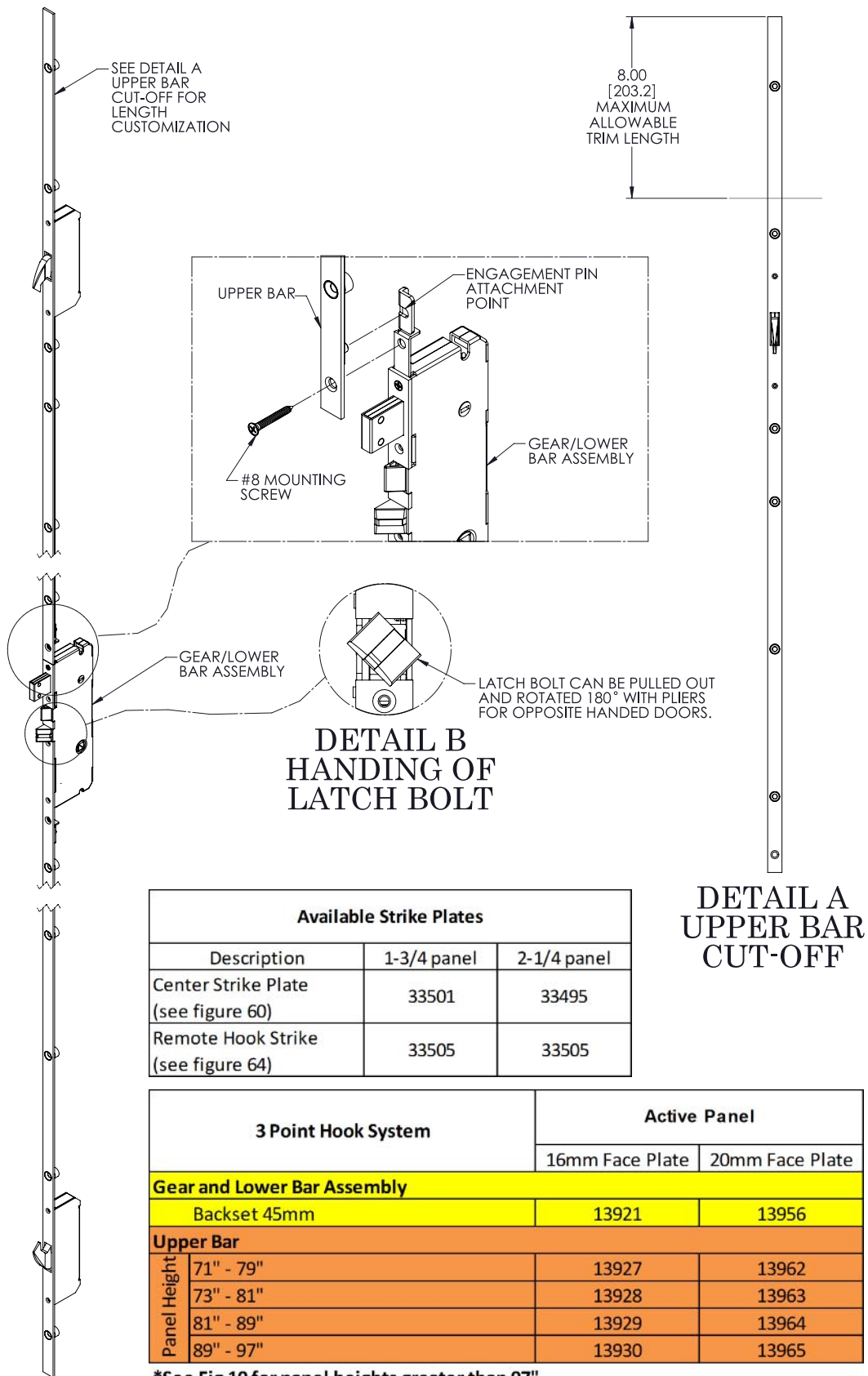


# SENTRY™ MULTI-POINT HINGED PATIO DOOR SYSTEM

FIG. 8 SENTRY HINGED PATIO DOOR LOCKS  
3 POINT HOOK CONFIGURATION MATRIX



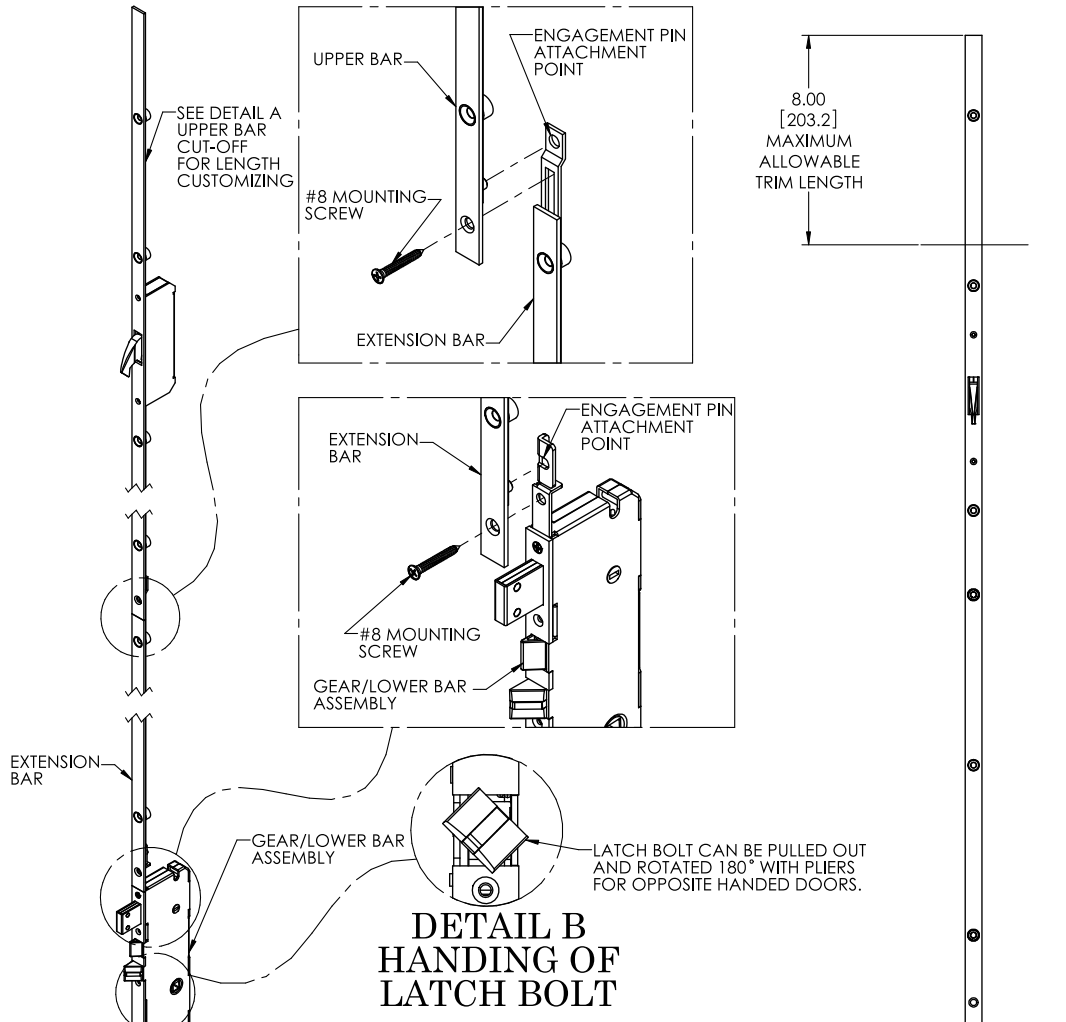
**FIG. 9 SENTRY HINGED PATIO DOOR LOCKS  
3 POINT HOOK ASSEMBLY FOR PANELS 71" TO 97"**



\*See Fig 10 for panel heights greater than 97"

# SENTRY™ MULTI-POINT HINGED PATIO DOOR SYSTEM

FIG. 10 SENTRY HINGED PATIO DOOR LOCKS  
3 POINT HOOK ASSEMBLY FOR PANELS 97" TO 121"

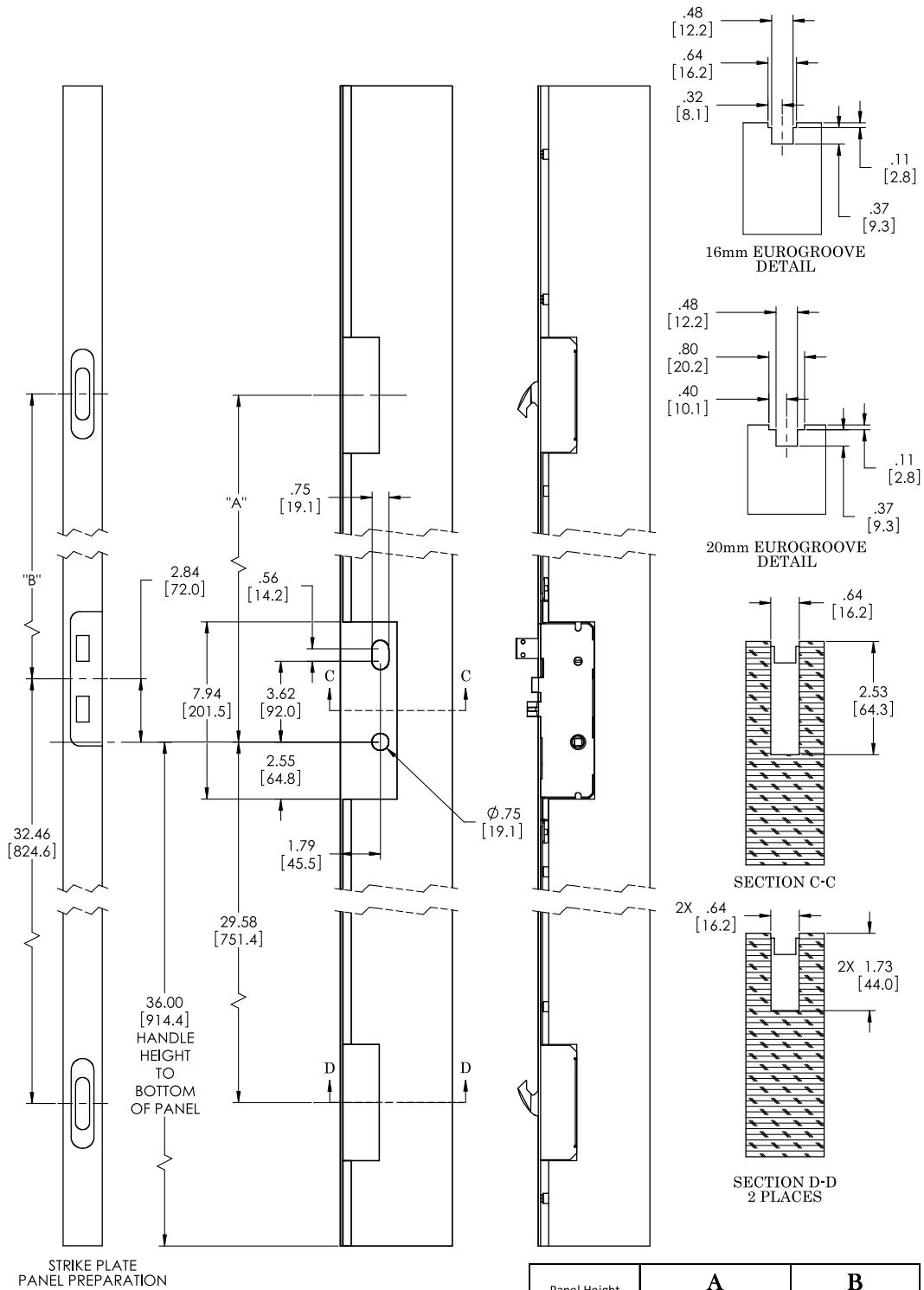


## DETAIL A UPPER BAR CUT-OFF

Available Strike Plates		
Description	1-3/4 panel	2-1/4 panel
Center Strike Plate (see figure 60)	33501	33495
Remote Hook Strike (see figure 64)	33505	33505

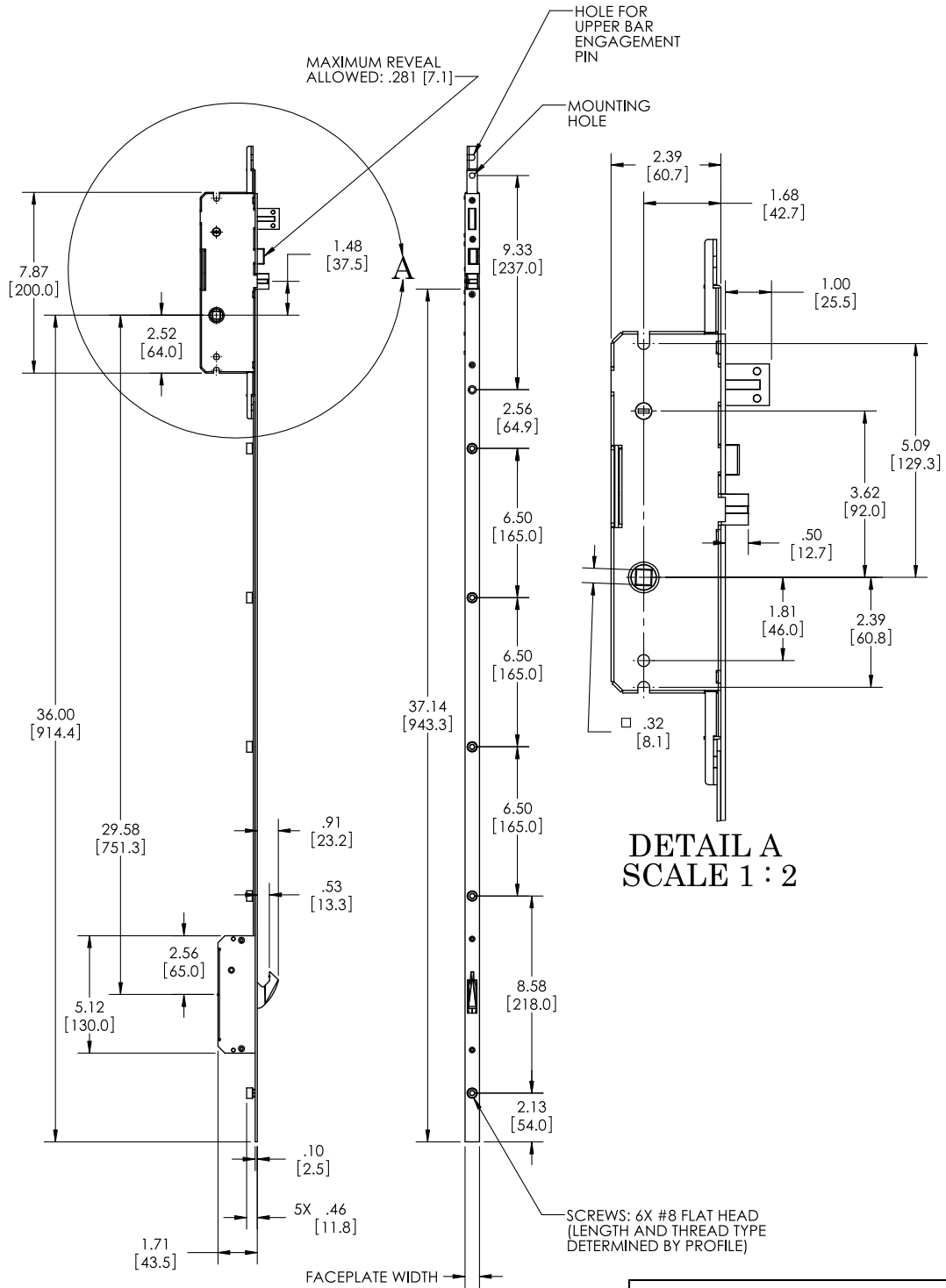
3 point Hook System		Active Panel			
		16mm Face Plate	20mm Face Plate	Unit Length	
<b>Gear and Lower Bar Assembly</b>					
Backset 45mm		13921	13956	41.3 (1050.3mm)	
<b>Upper Bar</b>					
Panel Height	97" - 105"	Upper Bar	13928	13963	39.70 (1008.4mm)
		Extension Bar	13920	13955	24.00 (609.6mm)
	105" - 113"	Upper Bar	13929	13964	47.70 (1211.6mm)
		Extension Bar	13920	13955	24.00 (609.6mm)
	113" - 121"	Upper Bar	13930	13965	55.70 (1414.8mm)
		Extension Bar	13920	13955	24.00 (609.6mm)

**FIG. 11 SENTRY HINGED PATIO DOOR LOCKS  
3 POINT HOOK PANEL PREPARATION**



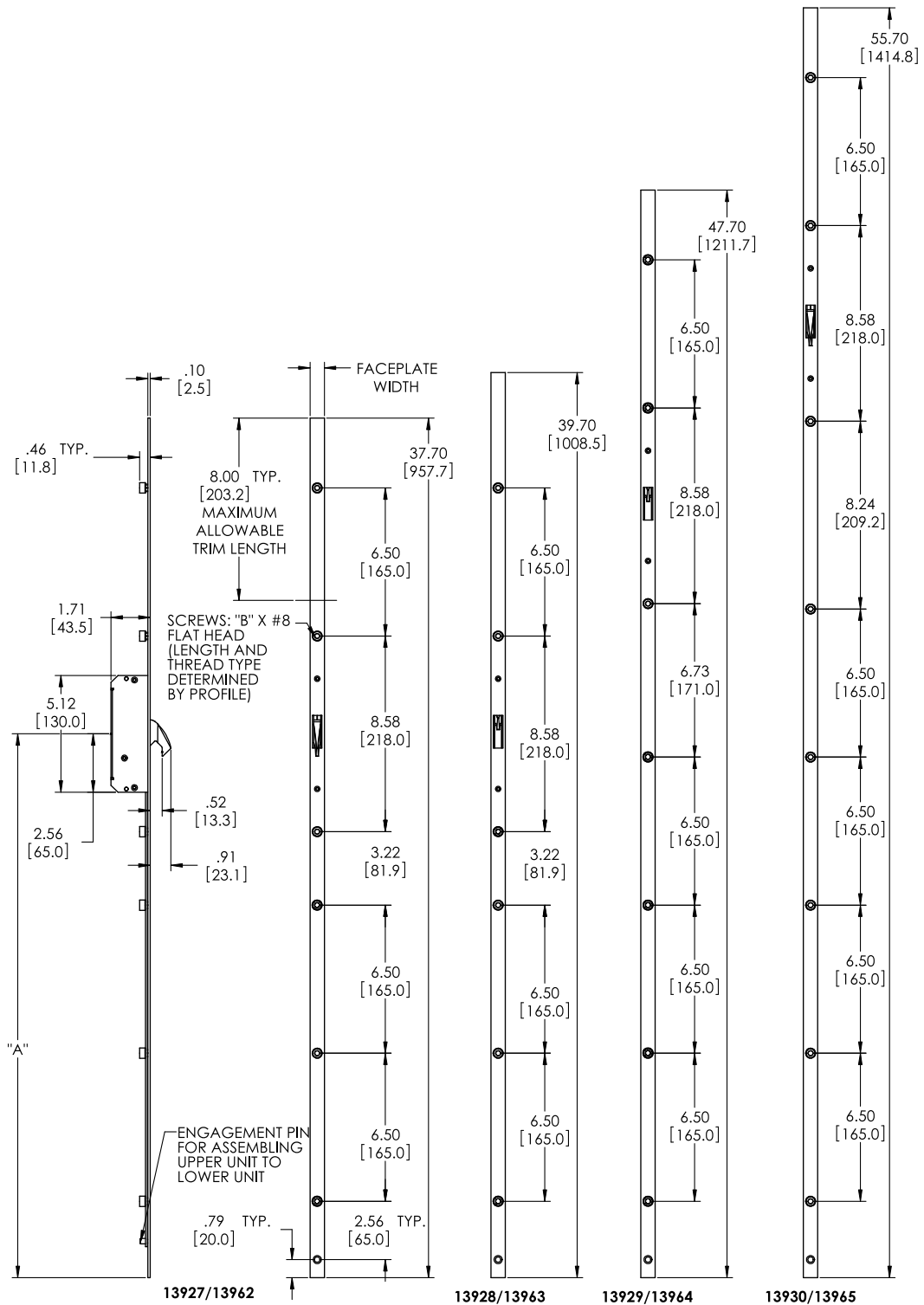
# SENTRY™ MULTI-POINT HINGED PATIO DOOR SYSTEM

FIG. 12 SENTRY HINGED PATIO DOOR LOCKS  
3 POINT HOOK GEAR AND LOWER BAR ASSEMBLY



Gear and Lower Bar Assembly	
16mm Face Plate	20mm Face Plate
13921	13956

**FIG. 13 SENTRY HINGED PATIO DOOR LOCKS  
3 POINT HOOK UPPER BAR ASSEMBLY**



Upper Bar Assembly		A	B
16mm Face Plate	20mm Face Plate	Hook Location	Screws Required
13927	13962	23.85 (605.9mm)	7
13928	13963	23.85 (605.9mm)	7
13929	13964	33.85 (859.9mm)	8
13930	13965	41.85 (1063.1mm)	9

# SENTRY™ MULTI-POINT HINGED PATIO DOOR SYSTEM

FIG. 14 SENTRY HINGED PATIO DOOR LOCKS  
EXTENSION BAR ASSEMBLY

