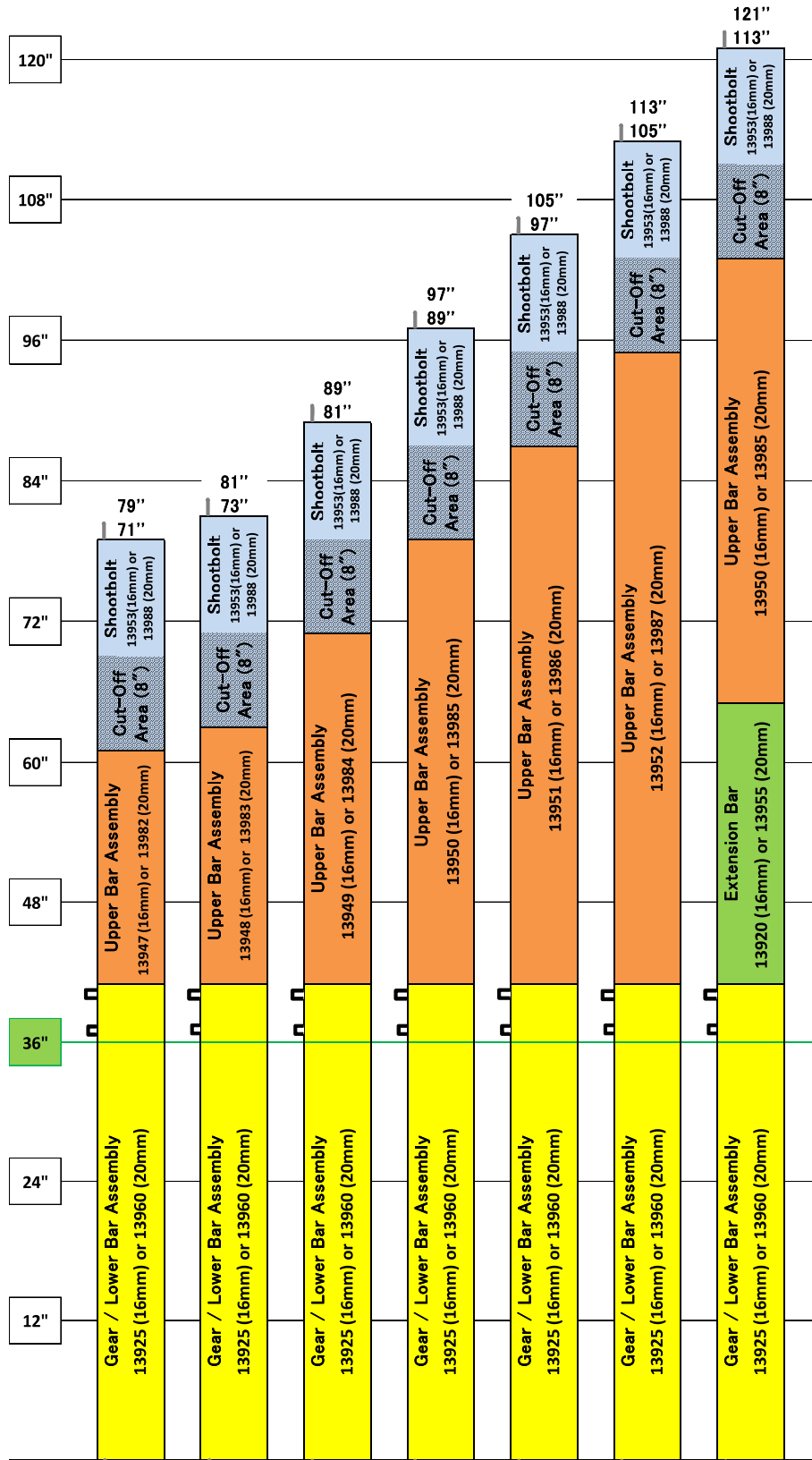
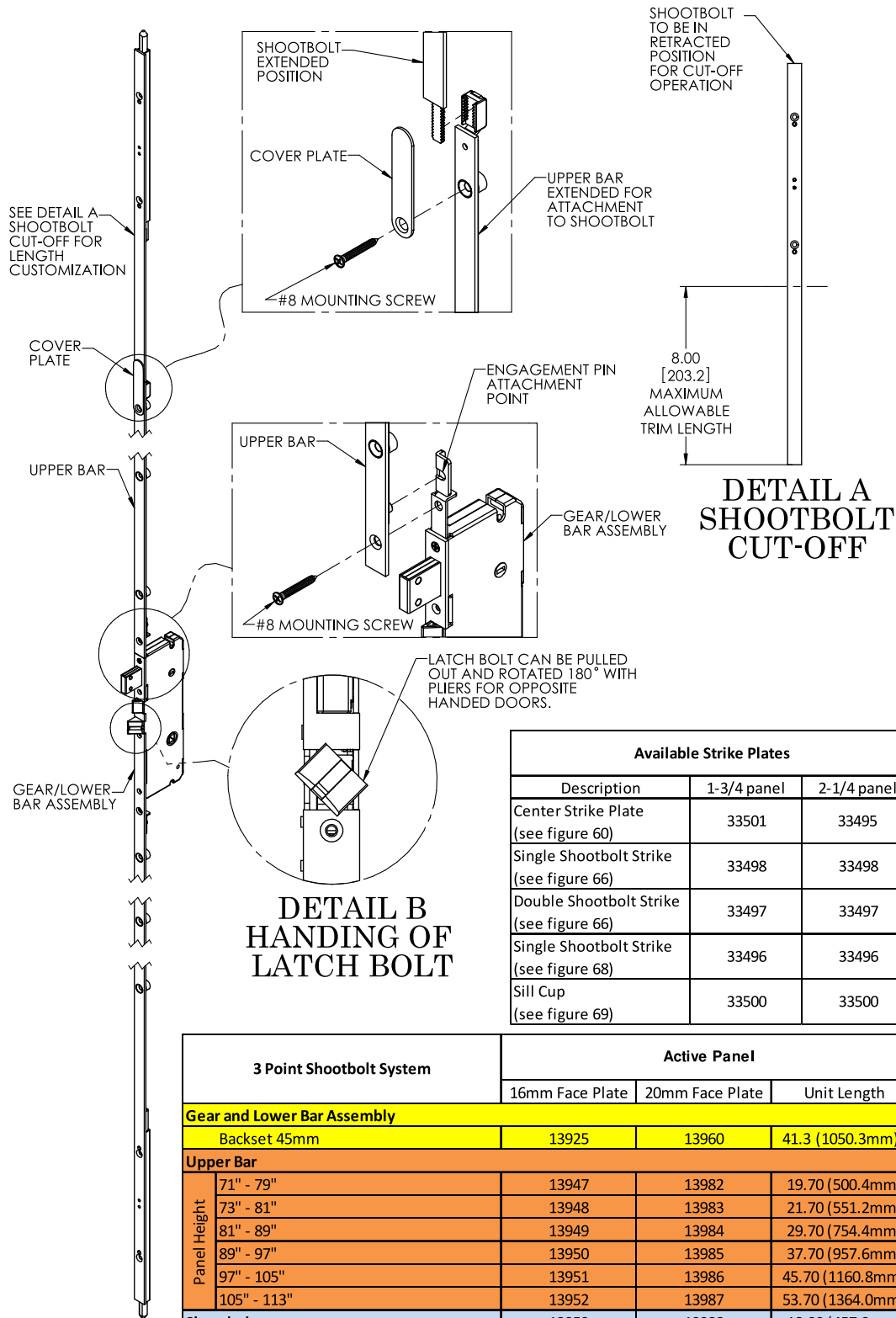


**FIG. 15 SENTRY HINGED PATIO DOOR LOCKS
3 POINT SHOOTBOLT CONFIGURATION MATRIX**



SENTRY™ MULTI-POINT HINGED PATIO DOOR SYSTEM

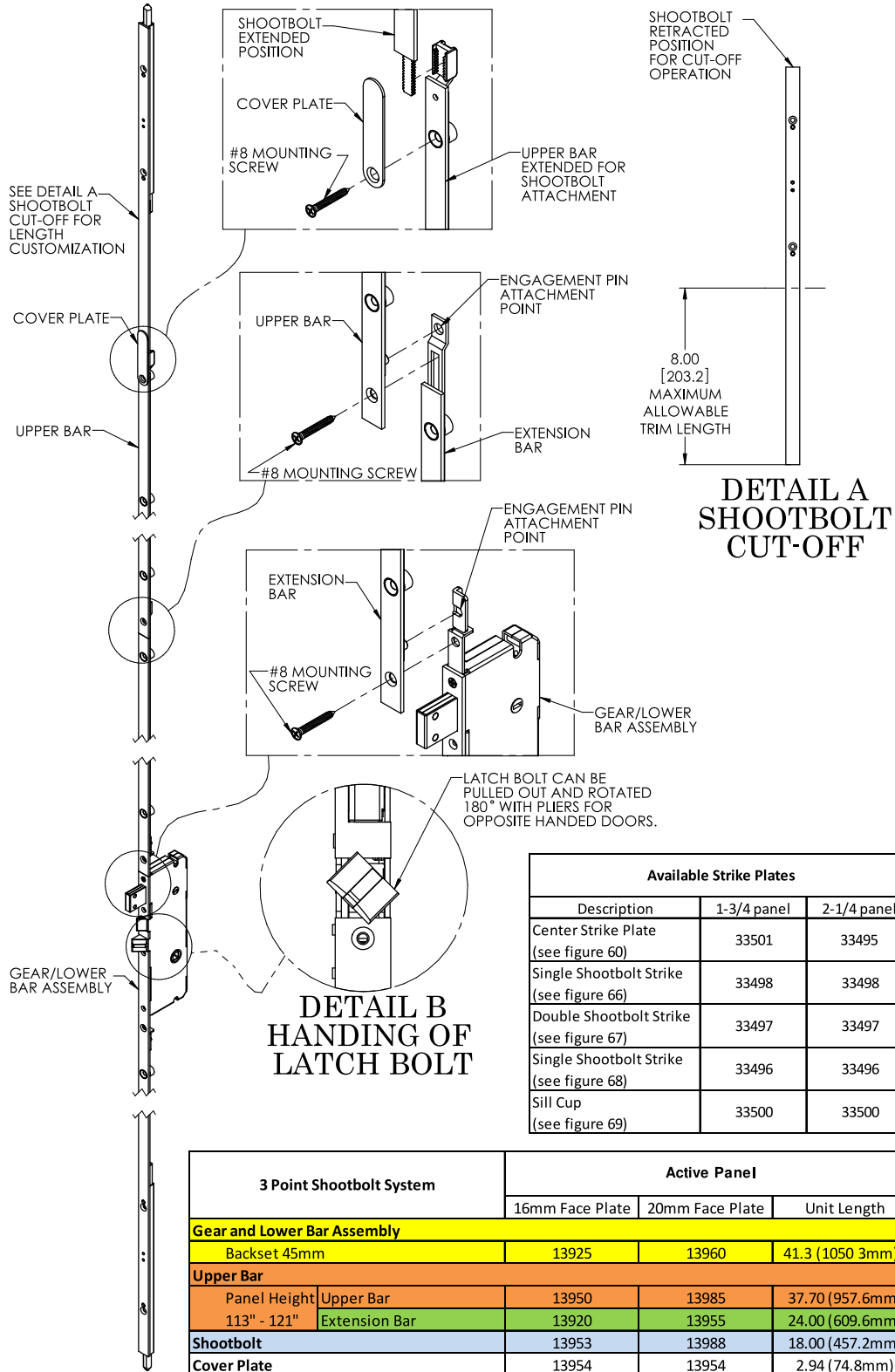
FIG. 16 SENTRY HINGED PATIO DOOR LOCKS
3 POINT SHOOTBOLT ASSEMBLY FOR PANELS 71" TO 113"



*See Fig 17 for panel heights greater than 113"

SENTRY™ MULTI-POINT HINGED PATIO DOOR SYSTEM

FIG. 17 SENTRY HINGED PATIO DOOR LOCKS
3 POINT SHOOTBOLT ASSEMBLY FOR PANELS 113" TO 121"

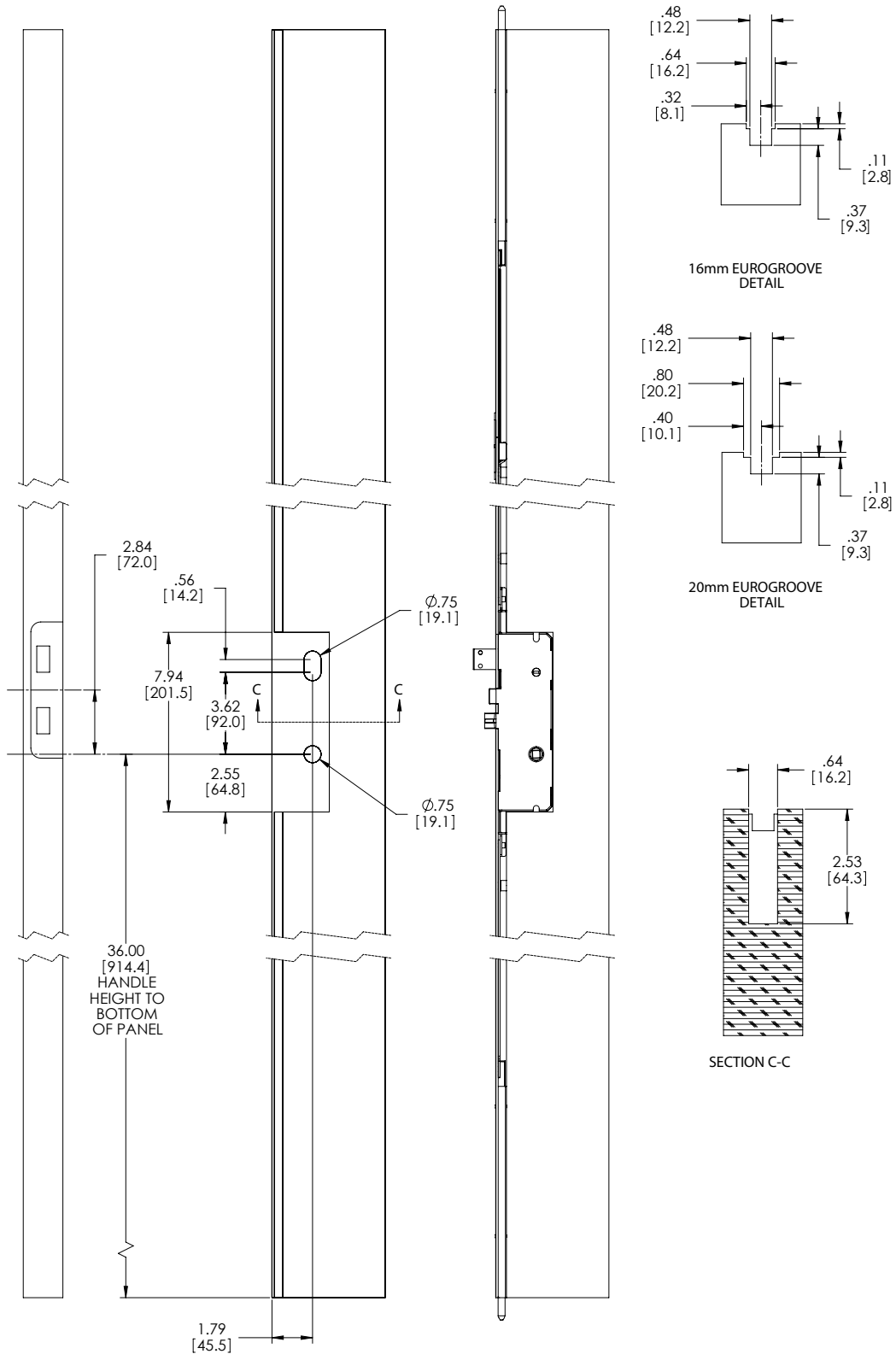


Available Strike Plates		
Description	1-3/4 panel	2-1/4 panel
Center Strike Plate (see figure 60)	33501	33495
Single Shootbolt Strike (see figure 66)	33498	33498
Double Shootbolt Strike (see figure 67)	33497	33497
Single Shootbolt Strike (see figure 68)	33496	33496
Sill Cup (see figure 69)	33500	33500

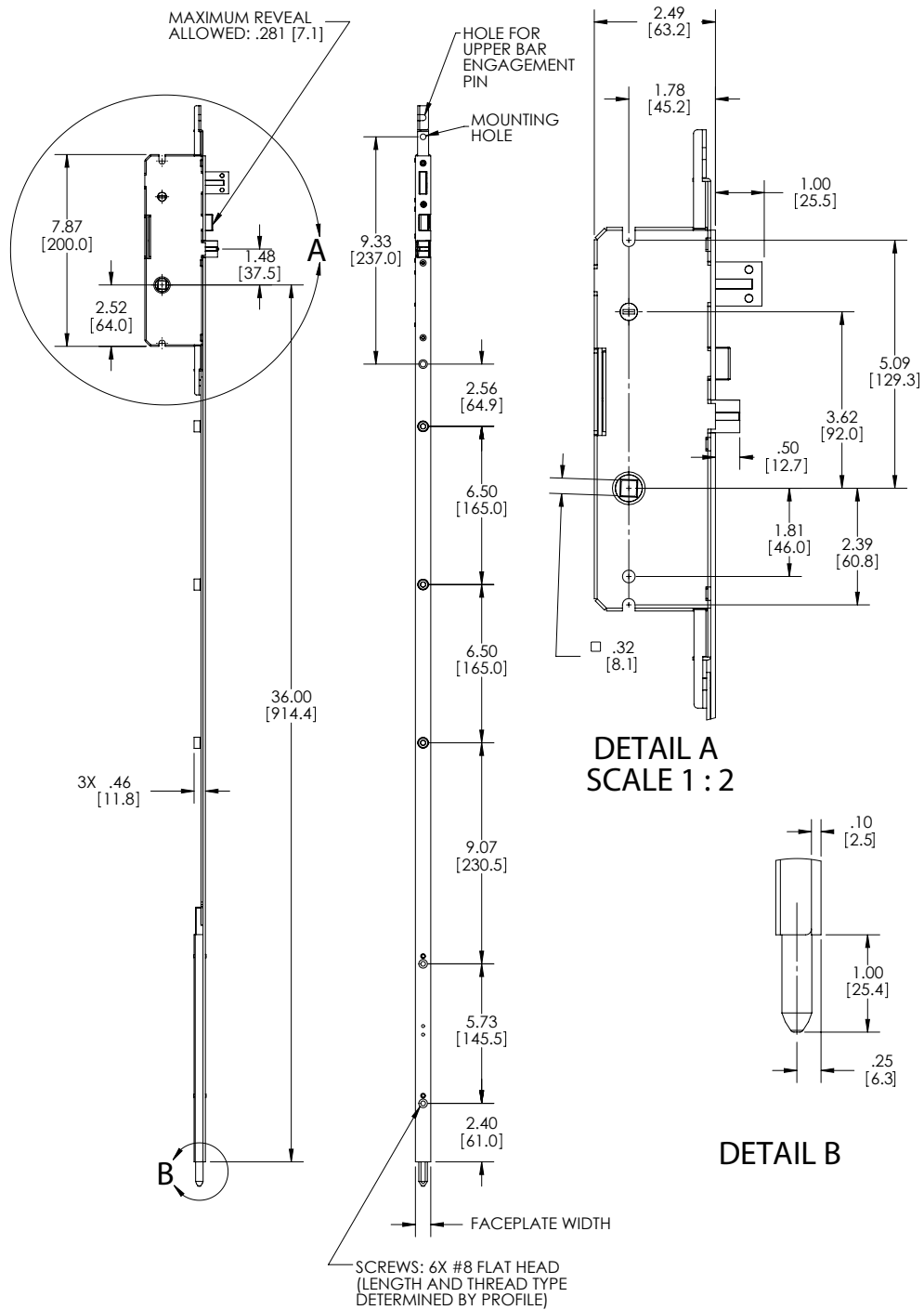
3 Point Shootbolt System		Active Panel		
		16mm Face Plate	20mm Face Plate	Unit Length
Gear and Lower Bar Assembly				
Backset 45mm		13925	13960	41.3 (1050.3mm)
Upper Bar				
Panel Height 113" - 121"	Upper Bar	13950	13985	37.70 (957.6mm)
	Extension Bar	13920	13955	24.00 (609.6mm)
Shootbolt		13953	13988	18.00 (457.2mm)
Cover Plate		13954	13954	2.94 (74.8mm)

SENTRY™ MULTI-POINT HINGED PATIO DOOR SYSTEM

FIG. 18 SENTRY HINGED PATIO DOOR LOCKS
3 POINT SHOOTBOLT PANEL PREPARATION



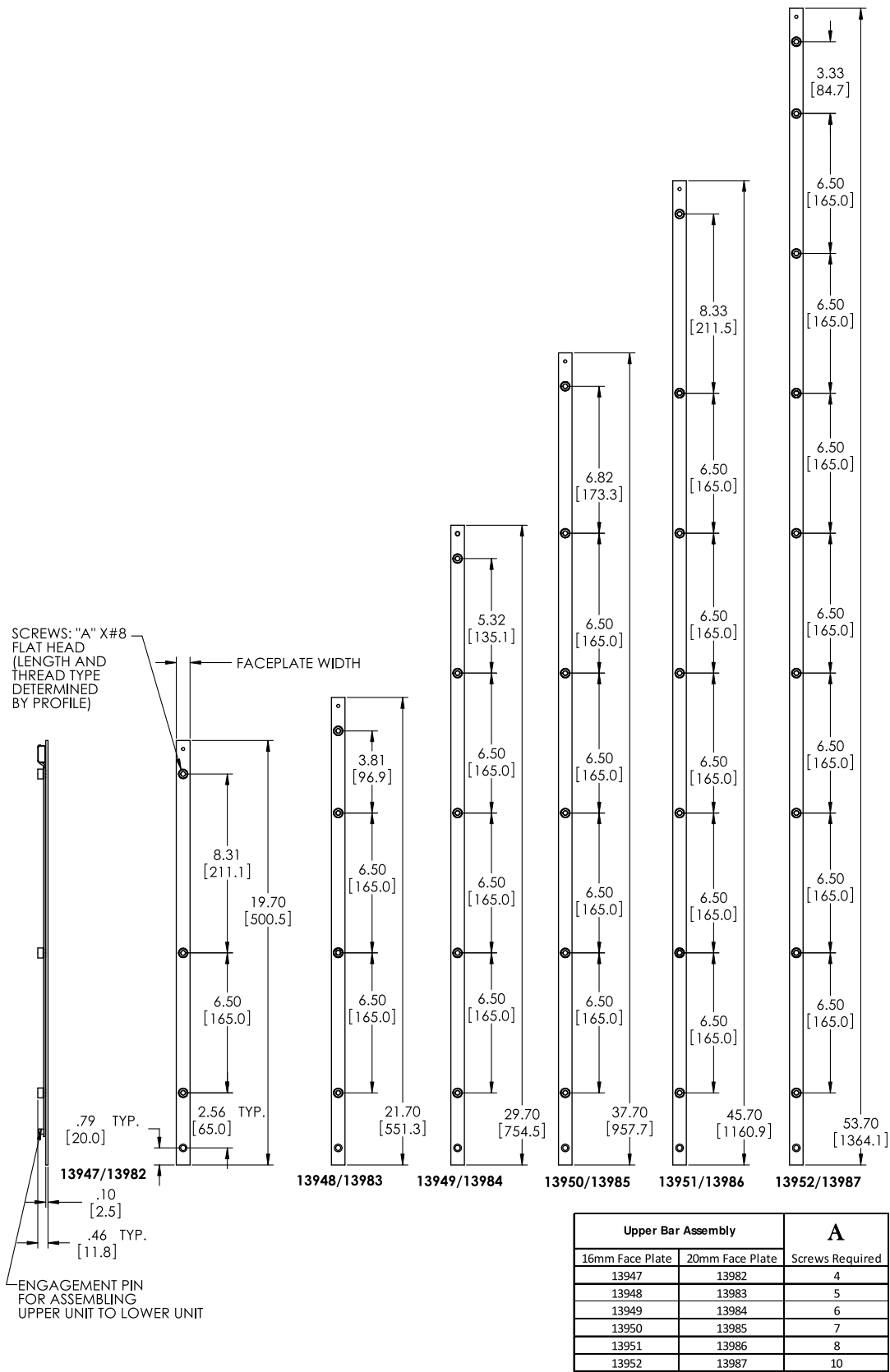
**FIG. 19 SENTRY HINGED PATIO DOOR LOCKS
3 POINT SHOOTBOLT GEAR AND LOWER BAR ASSEMBLY**



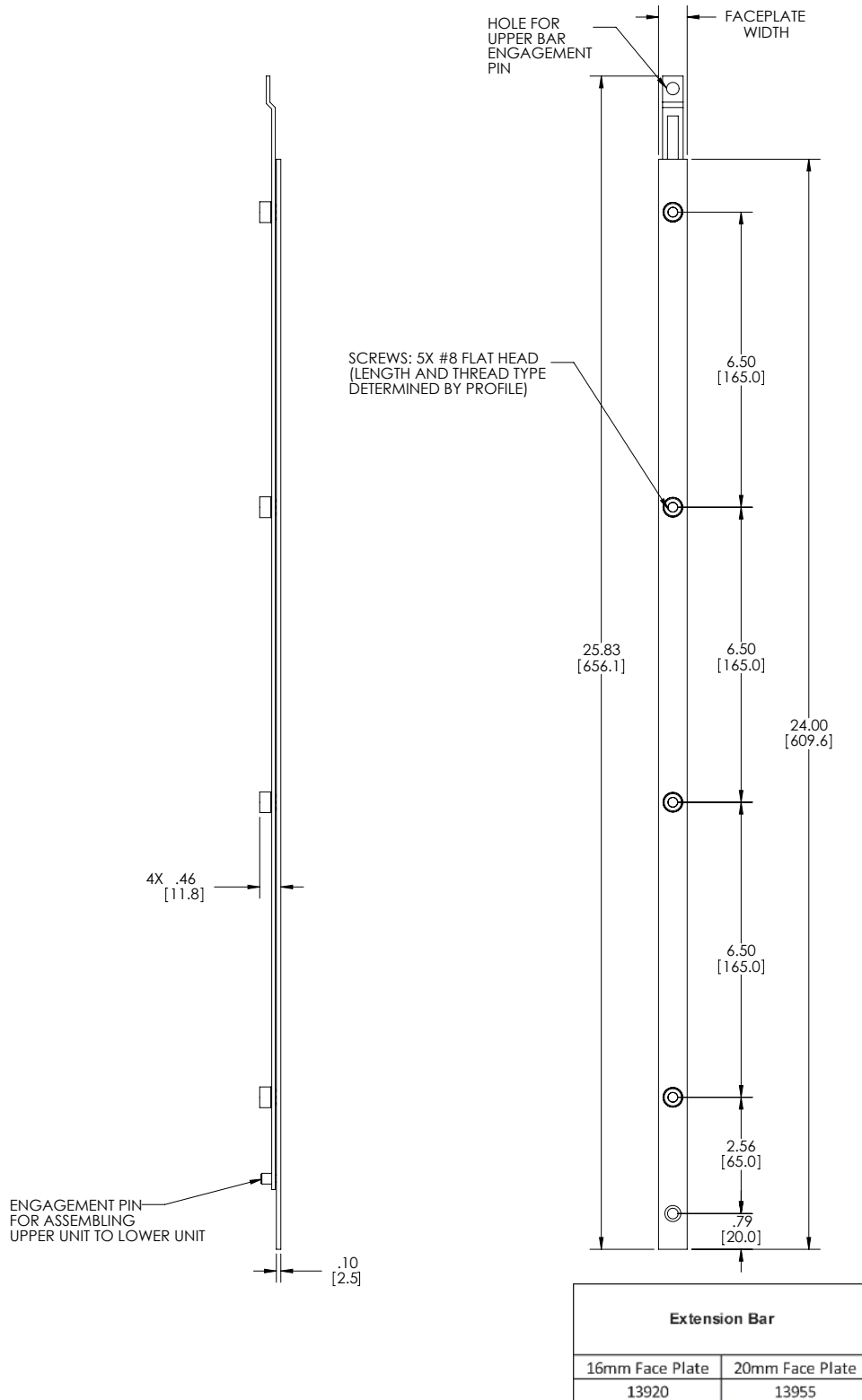
Gear and Lower Bar Assembly	
16mm Face Plate	20mm Face Plate
13925	13960

SENTRY™ MULTI-POINT HINGED PATIO DOOR SYSTEM

FIG. 20 SENTRY HINGED PATIO DOOR LOCKS
3 POINT SHOOTBOLT UPPER BAR ASSEMBLY

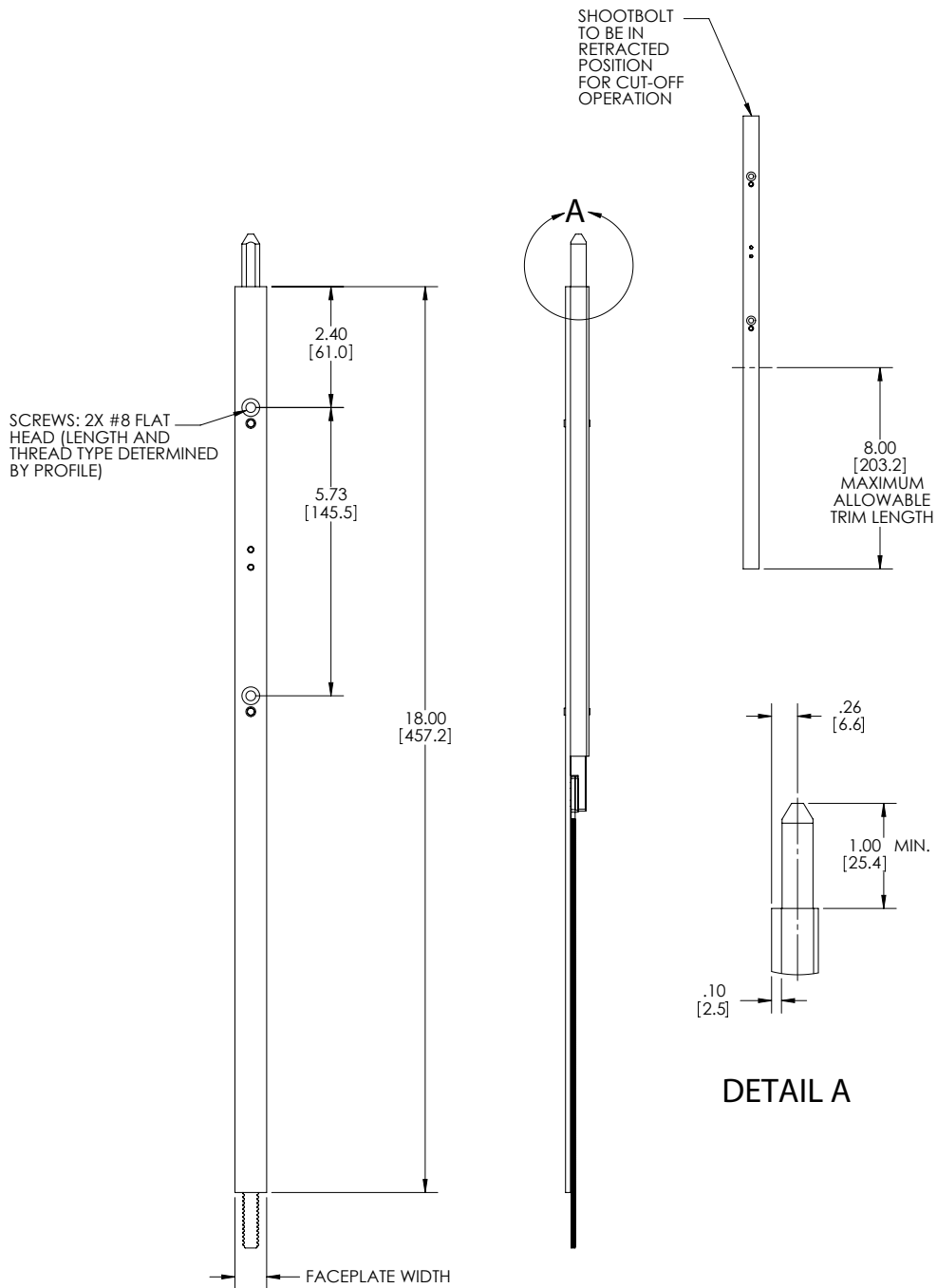


**FIG. 21 SENTRY HINGED PATIO DOOR LOCKS
EXTENSION BAR ASSEMBLY**



SENTRY™ MULTI-POINT HINGED PATIO DOOR SYSTEM

FIG. 22 SENTRY HINGED PATIO DOOR LOCKS
SHOOTBOLT ASSEMBLY



Shootbolt	
16mm Face Plate	20mm Face Plate
13953	13988

FIG. 23 SENTRY HINGED PATIO DOOR LOCKS
13954 COVER PLATE

