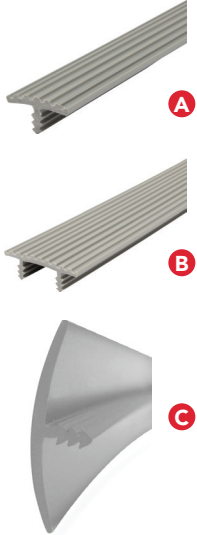


PVC FUNCTIONAL MOLDINGS

FLEXIBLE & CUT-TO-SIZE

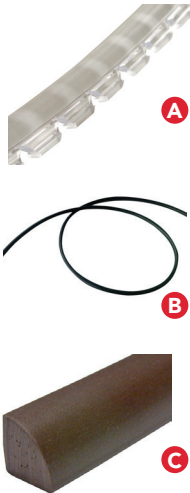


FLEXIBLE T-MOLDINGS

USED LIKE EDGEBOARDING

- Highly resistant to shock and durable
- Can be used for round shapes: simply cut to create rounded corners

	No.	Finish	Width	Thickness	Length
A	340806	Light Gray	3/4" (19 mm)	1/8" (3 mm)	8' (2.44 m)
	340830	White			
	340890	Black			
B	1140806	Light Gray	1 1/4" (32 mm)	1/8" (3 mm)	8' (2.44 m)
	1140830	White			
	1140890	Black			
C	58125105	Light Gray	5/8" (16 mm)	1/16" (2 mm)	175' (53.34 m)
	5812530	White			
	5812590	Black			
	34125105	Light Gray	3/4" (19 mm)	1/16" (2 mm)	175' (53.34 m)
	3412530	White			
	3412560	Brown			
	3412590	Black	1 1/4" (32 mm)	1/16" (2 mm)	125' (38.1 m)
	114125105	Light Gray			
	11412530	White			
		11412590	Black		



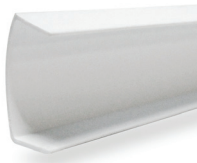
RETAINER MOLDINGS

HOLD AND CUSHIONS GLASS AND DOOR PANELS

- Flexible material
- Easy to cut with knife or scissors
- Eliminates rattling

	No.	Description	Finish	Thickness	Length
A	1021500	Glass door retainer	Fruitwood	7/16" (11 mm)	1000' (304.8 m)
	1021511		Clear	7/16" (11 mm)	1000' (304.8 m)
	1021534		Off White	7/16" (11 mm)	1000' (304.8 m)
	1021590		Black	7/16" (11 mm)	1000' (304.8 m)
	1001711		Clear	9/16" (14 mm)	500' (152.4 m)
	1001760		Dark Brown	9/16" (14 mm)	500' (152.4 m)
B	021500	Door panel spacer - tube*	Black	1/4" (6 mm)	1500' (457.2 m)
	021500C		Black	1/4" (6 mm)	1/2" (13 mm) Box of 36,000 units
C	2088P60	Glass retainer - staple type	Dark Brown	1/4" (6 mm)	1000' (304.8 m)

*Designed for 5-piece doors



CAP MOLDINGS

USED AS A PROTECTIVE MOLDING ON SHELF EDGE

- Quick and easy installation

No.	Finish	Width	Length
5030	White	1/2" (13 mm)	8' (2.44 m)
5830	White	5/8" (16 mm)	8' (2.44 m)



PVC FUNCTIONAL MOLDINGS

OFFICE, COMMERCIAL
OR RESIDENTIAL
APPLICATIONS

SEALING PROFILES

A B

DESIGNED TO SEAL CABINET DOORS

- Prevents water, insects and dust from entering cabinets
- Dampens closing action of the cabinet door

C

- Designed to seal kitchen and bathroom countertops or other commercial structures



A

With peel and stick tape



B



C

	No.	Application	Finish	Width	Height	Lenght
A	143160830	For cabinet doors	White	5/16" (8 mm)	1/4" (6 mm)	8' (2.44 m)
B	141812511	For cabinet doors	Clear	1/8" (3 mm)	1/2" (13 mm)	125' (38.1 m)

	No.	Application	Finish	Width	Height	Lenght
C	1210811	For counter	Clear	1/2" (13 mm)	11/16" (17 mm)	8' (2.44 m)

WIRE MANAGEMENT MOLDINGS

ALLOWS FOR WIRE STORAGE

- With peel and stick tape
- Quick and easy installation



A



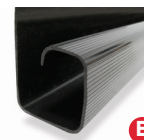
B



C



D

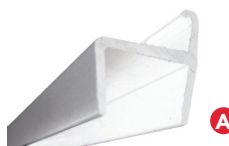


E

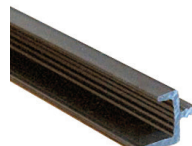
	No.	Description	Finish	Dimensions	Lenght
A	PF01030	Coextruded	White	1/2" x 7/16" (13 x 11 mm)	8' (2.44 m)
B	PF04030	Coextruded	White	1 3/16" x 1/2" (30 x 13 mm)	8' (2.44 m)
C	PF3430	Rigid PVC	White	11/16" x 1/2" (18 x 13 mm)	8' (2.44 m)
D	PF5690	Rigid PVC	Black	1 5/8" x 1" (41 x 25 mm)	6' (1.83 m) Bag of 5 units
E	512490	Rigid PVC	Black	2" x 1 1/2" (51 x 38 mm)	6' (1.83 m)

FILE HOLDERS

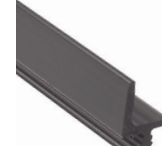
- Quick and easy installation



A



B



C

	No.	Finish	Width	Lenght
A	124230	White	1/2" (13 mm)	8' (2.44 m)
	124290	Black		
	141230	White	5/8" (16 mm)	8' (2.44 m)
	141290	Black		
B	58890	Black	5/8" (16 mm)	8' (2.44 m)
C	1371890	Black	1/2" (13 mm)	8' (2.44 m)

