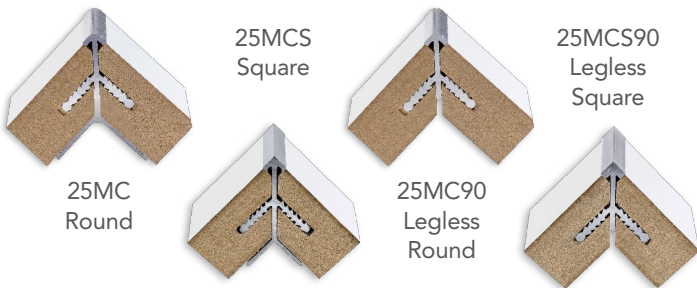


SLIMLINE EDGE AND LONG-LASTING CORNER PROTECTION

ALUMINUM PROFILES FOR ANY JOINERY PROJECT !

Stickman aluminum profiles have been engineered to increase strength and protection to edges.

Glue traps are incorporated to create a strong bond and hide any overflow. Do not require any screw fixings.



CORNER PROTECTION MOLDINGS

- Anodized aluminum
- Available in 8 foot lengths.

Product no.	Panel Thickness	Profile
25MC130810	1/2" (13 mm)	Round
25MC160810	5/8" (16 mm)	Round
25MC190810	3/4" (19 mm)	Round
25MC900810*	5/8" to 3/4" (16 to 19 mm)	Round
25MCS190810	3/4" (19 mm)	Square
25MCS900810*	5/8" to 3/4" (16 to 19 mm)	Square

* Legless

CORNERS FOR EDGE MOLDINGS

- Injection molded corners
- Eliminates the need to mitre three way corners.

Product no.	Size	Color/Finish
25MC3S10	9/16" (15 mm)	Satin aluminum
25MC3	1 1/2" (38 mm)	Light Gray



ADD STRENGTH AND PROTECTION TO EDGES AND CORNERS



EDGE PROTECTION MOLDINGS

For 1/2" (12 mm) to 3/4" (19 mm) panels.

- Anodized aluminum
- Available in 8 foot lengths.

Product no.	Description
25MCED0810	Round edge
25MCSED0810	Square edge



JOINING MOLDING

Used to join 5/8" (16 mm) to 3/4" (19 mm) panels.

- Anodized aluminum
- Available in 8 foot lengths.

Product no.	Color/Finish
25MCBUT0810	Satin aluminum



TOOL & CUTTERS

PNEUMATIC PUNCH GUN

Used to hold the Stickman profiles as the glue sets to avoid using masking tape.

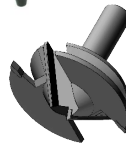
Product no.
25MCP



MITRE CORNER CUTTER

Used for Stickman corner moldings 25MC, 25MCS, 25MC90 and 25MCS90.

Product no.	Cutting Diameter	Shank Diameter
25MCC	2 7/16" (62 mm)	1/2" (13 mm)



CUTTER FOR MCED PROFILE

Used for Stickman profile MCED and MCSED.

Product no.
25MCEDCUT



HEAVY DUTY SLOTTING CUTTER

Counter sunk. Used in conjunction with 25MCVCNC for volume machining.

Product no.	Cutting Diameter
25MCHDC	2" (51 mm)



V CUTTER FOR CNC

For volume machining on CNC. Use in conjunction with 25MCHDC to cut Stickman's arms.

Product no.	Cutting Diameter	Shank Diameter
25MCVCNC	2 1/4" (57 mm)	1/2" (13 mm)

