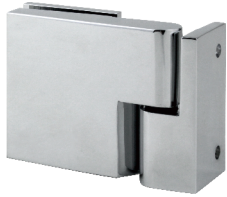


# Technical Detail

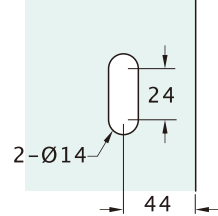
# Square lift off hinge right side 90° wall to glass



## Right side



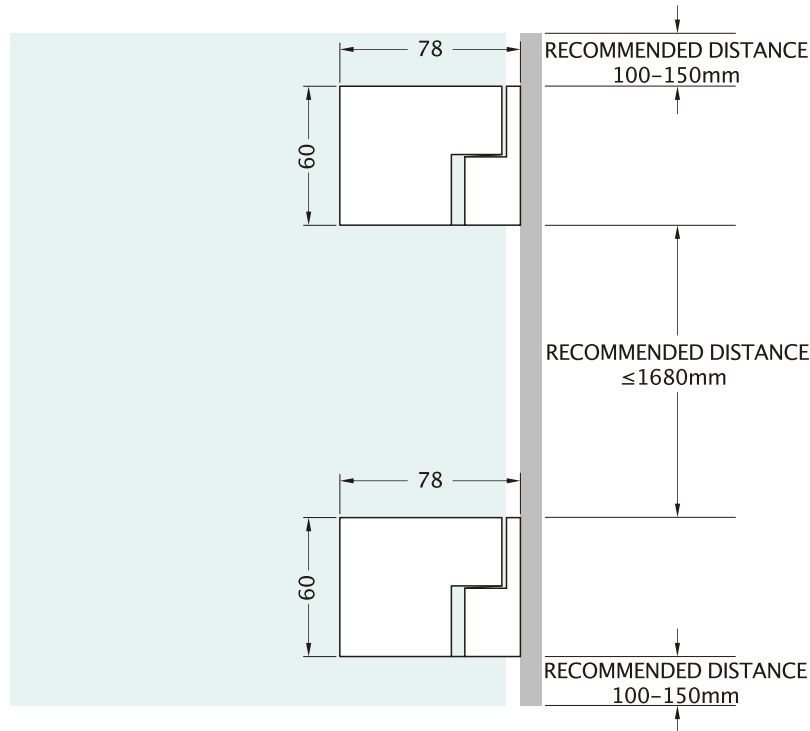
## Glass cut out:



## Installation Instruction

MODEL	Max door width	Max door weight	Glass thickness
PGLOH1409002140	1000mm	45KG	8 - 12mm glass
PGLOH1409002195	1000mm	45KG	8 - 12mm glass

Finishes  
 140 = Chrome  
 195 = Brushed nickel



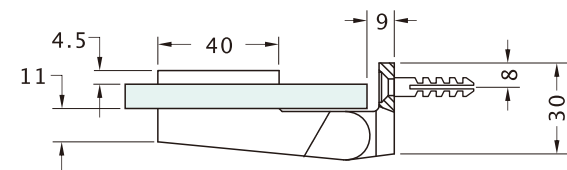
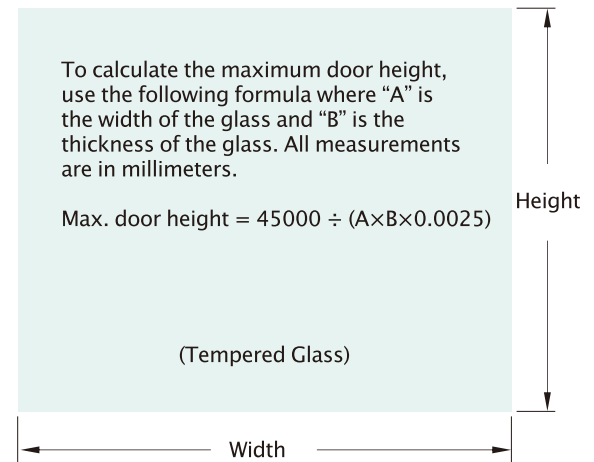
**Step 1.** Ensure all glass panels are made of tempered glass.

**Step 2.** Measure the size and weight of the glass door. Do not exceed the max door width and max door weight.

**Step 3.** Prepare the glass as indicated in the template and at the recommended distances.

**Step 4.** Install the hinge to the door as shown in the drawing.

**Step 5.** Finish installing the door and test that it opens and closes properly.



### Tools required to install:

Spirit Level, Measuring tape, Power drill, Allen key set, Philips screwdriver, Plastic wedges and 8 - 10 mm drill bit for stone.

**Please see safety instructions on power drill before starting assembly**

285x210mm